



MANCINI MEC-SERVICE

TORNITURA | FRESATURA | ALESATURA A CONTROLLO NUMERICO



Who We are



The experience that shapes steel

PRECISION MECHANICAL WORKSHOP IN THE HEART OF ITALY.

For 25 years, we have been operating in the field of precision mechanics with specialized operators who employ all their skills in turning, milling, numerical control boring, and steel and metal welding for the production of mechanical assemblies.

Our company is qualified and experienced in the processing of metals, their derivatives, and even the latest generation alloys.

After investing in personnel and equipment, we have achieved the goal of qualifying our company by obtaining ISO 9001/2015 certification.



Always at the forefront of technology, highest processing and dimensional testing standards, to achieve our goal: quality.



Continuous commitment from our employees.



Young and dynamic structure.



Consolidated experience in the field of those who have always been in close contact with mechanical technology and metal removal processes.

www.mancinimecservice.com

Our family-owned company was established in the late 1990s, and Stefano Mancini's thirty years of experience in the metalworking industry have been complemented by the creativity, determination, and capabilities of his sons Alex and Marcello and daughter Valentina.

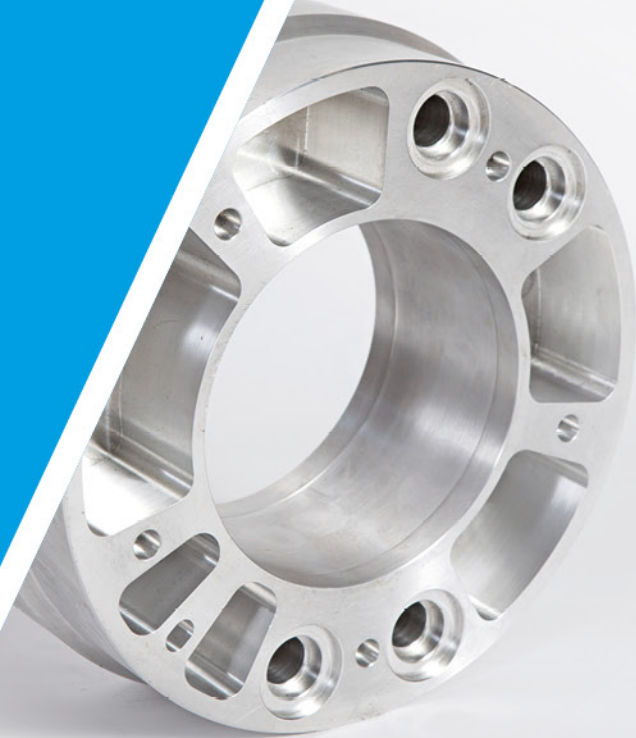
Our business, originally founded as a turning shop for metal processing, has evolved over the years thanks to the use of high-end machinery. These machines allow us to pay particular attention to details, tolerances, and finishes. Our strength lies in the close collaboration between design and specialized craftsmanship, ensuring professionalism, punctuality, and product quality for our clients. Today, our clientele operates on a global scale.



Machining

PRECISION MECHANICAL PROCESSING

We specialize in **precision mechanical machining** for the production of industrial mechanical components used in various sectors, including earthmoving, packaging, the nautical and offshore industry, wind power, power transmission, the food/pharmaceutical sector, and shop and stand fittings.



PRECISION MECHANICAL PROCESSING

The current market demands increasing attention to the production of flawless components. That's why we offer a turnkey service through a supply network with complementary companies, allowing us to guide our customers towards a finished product without having to deal with multiple parties.

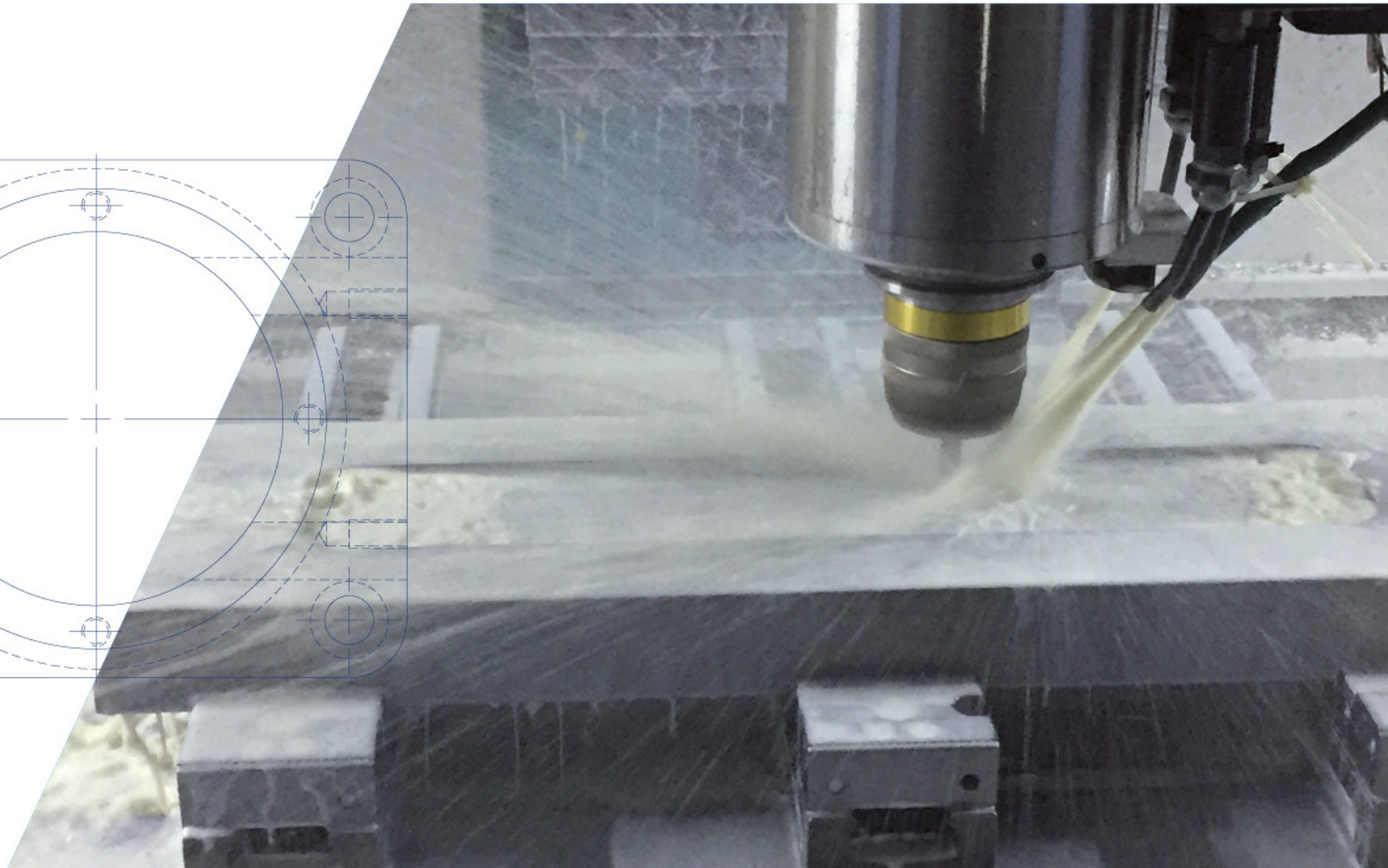
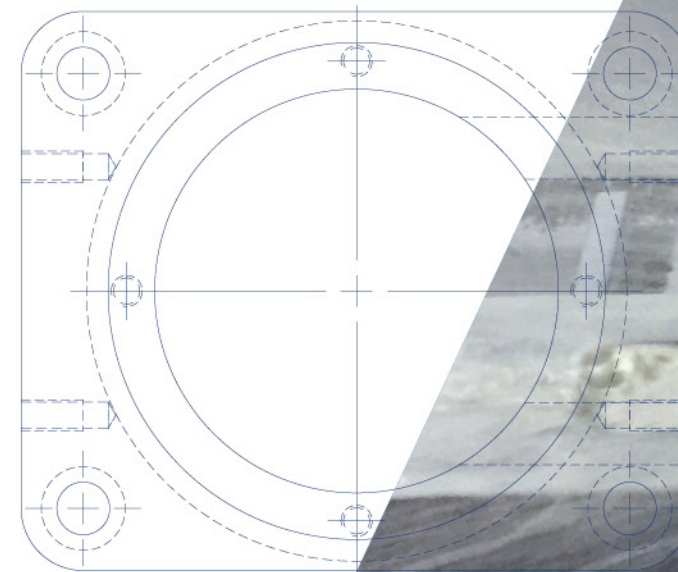


The experience that shapes steel



TYPICAL PROCESSING

The possible machining operations within our company are numerous. The most well-known ones include **turning, milling, drilling, and threading or tapping, not to mention boring, custom cutting, and welding.** These operations are carried out using **state-of-the-art CNC (computer numerical control) machines** or traditional equipment. All machining is followed by **dimensional testing** to ensure the required quality and precision.



Services

CNC TURNING OF MECHANICAL COMPONENTS

We specialize in CNC turning services for various types of materials, ranging from stainless steel to plastics, highly alloyed steels, and noble materials such as bronze and copper.

Our dedicated team ensures that customer requirements are met with a strong focus on quality, timely delivery, precise dimensional characteristics of components, and metal finishing.

4 HORIZONTAL LATHES

These lathes are equipped with motorized tools and a Y-axis, allowing us to work on components with lengths exceeding one meter.

OUR MACHINE PARK

Our lathe machines enable us to work within a diameter range of 40 to 900mm. By utilizing motorized tools and a Y-axis, we ensure maximum flexibility in our machining processes. Our lathe machine park consists of:

9 VERTICAL LATHES

These are equipped with continuous C-axis rotation, allowing us to handle even heavy components with complete safety.

Additionally, we have an in-house traditional turning department featuring 3 parallel lathes. These lathes provide us with a swing capacity of 800mm and a length of up to 3 meters, enabling us to carry out quick and special repair activities.



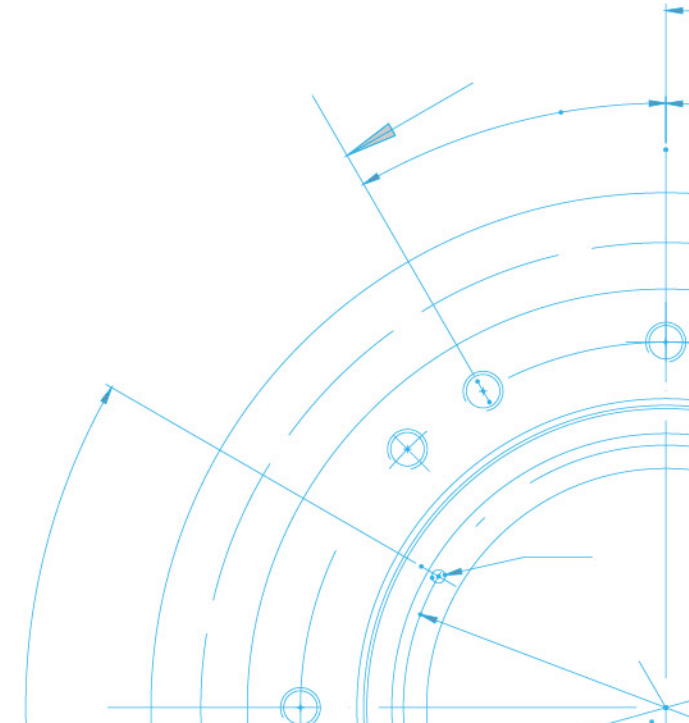
DRILLING OF MECHANICAL COMPONENTS

We provide our customers with **specialized technicians in precision mechanical machining**, including drilling and CNC milling applied to metals, their derivatives, noble materials, and plastics.



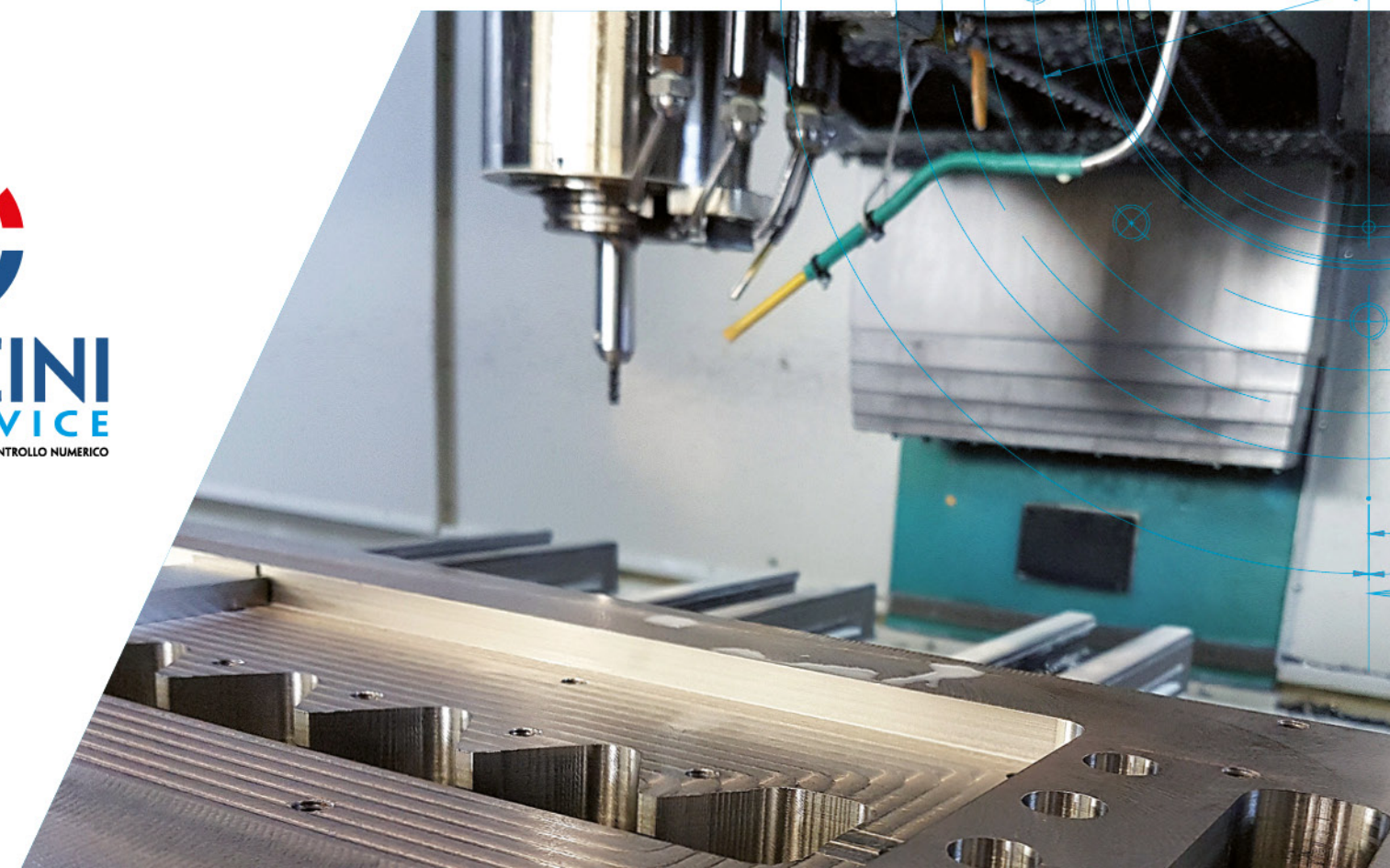
THE EQUIPMENT USED FOR DRILLING INCLUDES:

- Horizontal machining center with 6 pallets: Mori Seiki SH500
- Vertical machining center: Doosan DNM 750L
- Vertical machining center: Haas VF4 SS
- Two vertical machining centers with rotary pallets: Quaser MK603
- Doosan MYNX 9500 machining center



DRILLING TECHNIQUES

Depending on the type and quantity of the batch, our production is carried out on **ISO 50** and **ISO 40** vertical machining centers, horizontal multi-pallet machines, and vertical rotary-pallet machines. We can work with maximum dimensions of 2500 x 950 mm and perform all related processes after drilling, including threading (done with taps or threading dies), countersinking, boring, and milling.



HIGH PRECISION MILLING AND HARD METAL WORK



MILLING TECHNIQUES

Starting by defining where to allocate production is the foundation of a quality and timely service, as outlined in the ISO 9001/2015 procedure. We have at our disposal horizontal and vertical machining centers with ISO40 and ISO50 capabilities, including multi-pallet options with dimensions ranging from 500x500mm to 2500x950mm, all with continuous 4th-axis capabilities.


THE EQUIPMENT WE USE FOR COMPONENT MILLING INCLUDES:

- Mori Seiki SH500 6-pallet horizontal machining center
- Doosan DNM 750L vertical machining center
- Haas VF4 SS vertical machining center
- 2 Quaser MK603 vertical machining centers with roto-pallets
- Doosan MYNX 9500 vertical machining center

HIGH PRECISION MILLING AND HARD METAL WORK

Precision milling of mechanical components is crucial for various industries that use **steel components**. We are committed to producing custom-milled parts while adhering to the characteristics of roughness, perpendicularity, shape, and tolerance specified for the components to be worked on.

Our milling process can be applied to a wide range of materials, including plastics, lightweight alloys, noble metals, stainless steels, and new alloys, ensuring high precision and quality in our work.



With the help of our own vehicle, we can provide direct delivery of processed products for any urgent needs in the provinces of Emilia Romagna, including Ravenna, Bologna, Forli-Cesena, and adjacent areas.

PRECISION BORING OF MECHANICAL COMPONENTS

We are equipped to provide finishing processes that involve the use of reamers or boring tools applied in turning or machining centers, offering diameters up to 900mm and multi-pallet tables with a maximum width of 2500x950 mm.

The equipment we use for precision boring on the components we produce includes:

- Doosan VT 900M motorized vertical lathe
- 3 motorized vertical lathes Doosan V 550M
- 5 motorized vertical lathes Doosan Puma V8300M
- 2 motorized horizontal lathes Doosan Puma 400M
- 2 Mori Seiki NL2500 Y motorized horizontal lathes with Y-axis
- Mori Seiki SH500 6-pallet horizontal machining center
- Doosan MINX 9500 vertical machining center
- Doosan DNM 750L vertical machining center
- Haas VF4 Super Speed vertical machining center
- 2 Quaser MK603 vertical machining centers with roto-pallets



WELDING SERVICES WELDED ASSEMBLY COMPONENTS

For us, welding complements the supplied components. Through the use of positioners, we can offer automated welding to assemble those parts that later require mechanical machining. This ensures proper positioning and co-axiality, with final machining performed after the welding process.

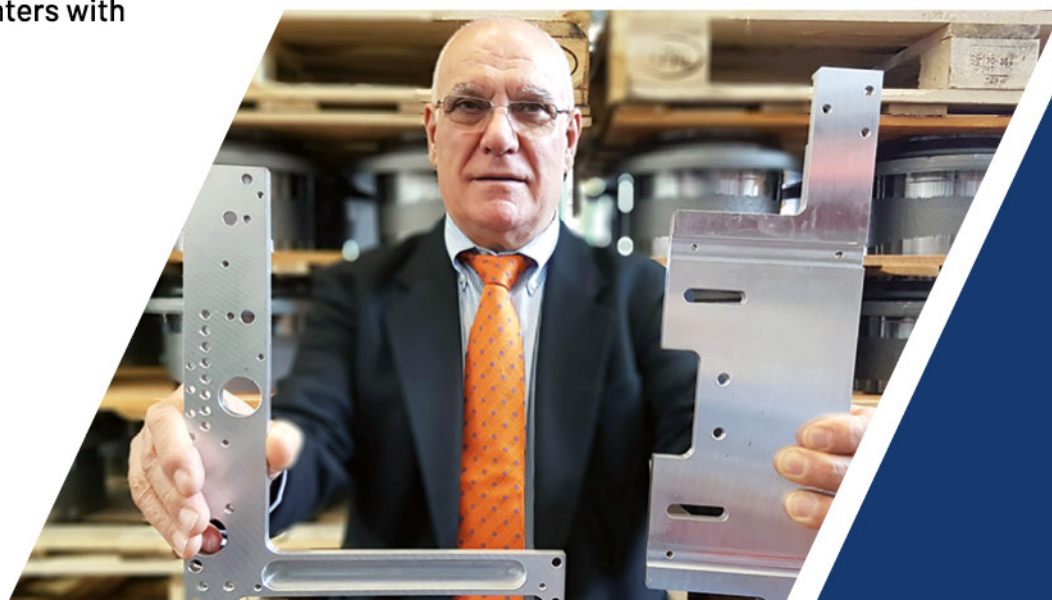
Our staff is also capable of manual **MIG** and **TIG** welding on individual pieces and, when necessary, can perform repairs even outside our premises.

CNC (Computer Numerical Control) Machining

CNC MECHANICAL TURNING CNC MACHINING

Within our company, we have organized our operations into three distinct departments, each equipped with specialized machinery and staffed by skilled professionals. Within the company, we have three distinct departments. The first department consists of thirteen lathes, including both vertical and horizontal ones, equipped with motorized tools and Y-axis. We can perform turning operations up to a diameter of 900 mm.

The second department includes six machining centers, with ISO 50 and ISO 40 capabilities, including horizontal multi-pallet and vertical roto-pallet machines. With these machines, we produce components that require contour milling, boring, drilling, and threading. The third department consists of all those traditional equipment that a mechanical workshop cannot do without: parallel lathe, milling machine, drilling machine, and surface grinder.



Products

HIGH-PRECISION MECHANICAL PRODUCTS

Our company has been involved in the production of **mechanical components for various industries** for many years. The extensive experience we have gained in the field of **precision mechanics** over the years, coupled with our constant focus on new technologies, is reflected in the manufacture of **metallic and non-metallic rollers, stainless steel and non-stainless steel joints and flanges, bodies and rings for power transmission, components for packaging machinery including those used in the food industry, products for lifting goods and people, as well as custom industrial spare parts.**

We can accommodate components with a **swing diameter of up to 1100 mm** and perform **turning operations of up to 900 mm on vertical lathes, including motorized ones.**



The experience
that shapes steel

PRECISION AND RESILIENCE IN OUR MACHINING

We are capable of meeting increasingly specific demands from the market by **producing high-quality products.**

All our machining processes are carried out in **very short lead times**, ensuring a quick delivery of a reliable final product.

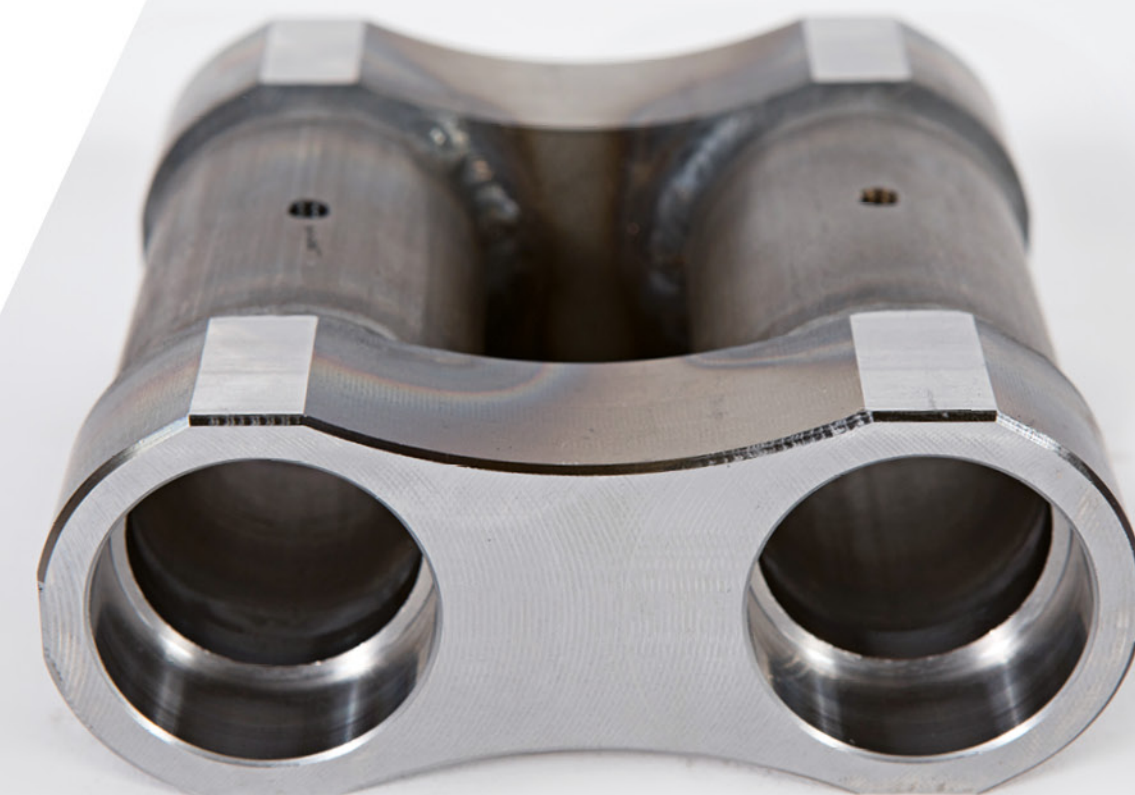


SETTORI

**Mechanical Components
for Earthmoving Machinery
and Industrial Sector**

For 20 years, we have been dedicated to the earthmoving machinery sector in an environment of continuous innovation and increasing demands. We are a trusted partner of a major group that distributes components worldwide for the motion and movement of quarry machinery, excavators, bulldozers, and all equipment related to earthmoving and lifting operations.

We ensure our customers precision turning services up to diameters of 900 mm with lathe swings exceeding one meter. Additionally, we offer drilling, milling, and boring services within a range of 2500 x 950 mm, using high-end CNC machines and measurement tools to ensure effective dimensional and qualitative control. All of this is carried out in compliance with ISO 9001/2015 certification standards.



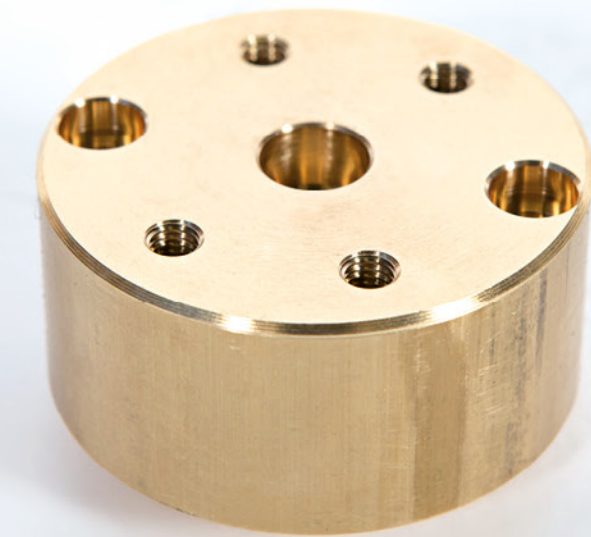


NAUTICAL / OFFSHORE

PRECISION MECHANICS FOR THE NAUTICAL & OFFSHORE INDUSTRY

The **nautical** sector encompasses a wide range of applications. Our proximity to the maritime sites of the Adriatic Sea allows us to produce components for fishing equipment as well as for the shipyards in the area.

Offshore platforms are another highly important sector in our region, where the use of high-quality components and guaranteed delivery times is essential.



PACKAGING

MECHANICAL PROCESSING FOR PACKAGING

In recent decades, **packaging** has become increasingly sophisticated and important. Today, the packaging of a product is an informational tool. That's why modern packaging equipment is becoming faster and more sophisticated, requiring complex components made from the most durable yet lightweight materials. For years, we have been involved in the development and cost-saving of mechanical components for the automation industry. Our main goal is to provide the customer with a functional product at an appropriate cost, without compromising on quality and reliability.

FOOD / PHARMACEUTICAL

COMPONENTS FOR THE FOOD AND PHARMACEUTICAL INDUSTRY

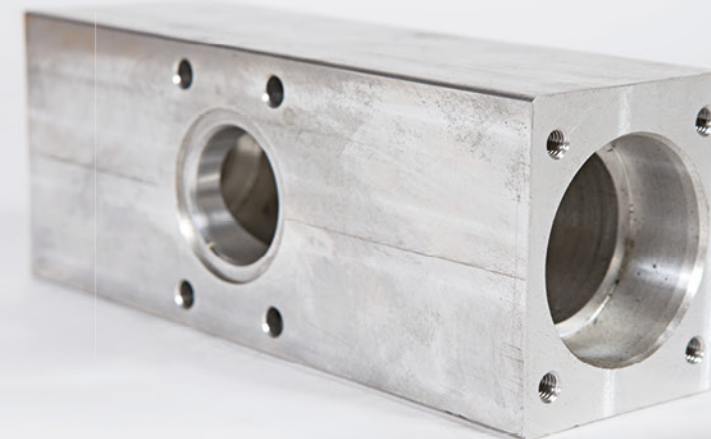
We specialize in the custom design and manufacturing of components and parts for machinery used in the **food and pharmaceutical industries**. Sensitive sectors like food and pharmaceuticals require a deep understanding of materials that, when in contact with substances or foods, do not harm them and do not show oxidation. Among these materials are food-grade bronze or bronze/aluminum, Ergal or Avional, Ampco as an excellent anti-wear material, and all stainless steels such as AISI 304-316 and innovative alloys.



WIND ENERGY / POWER TRANSMISSION

MECHANICAL COMPONENTS FOR POWER TRANSMISSION

Developed to drive heavy equipment, transmission through reducers is one of the applications found in many sectors. Our company specializes in the production of mechanical components, manufacturing steel and cast iron components and spare parts, including custom-made ones, for both the **power transmission sector** and the **sustainable energy industry**.



Equipment

MANCINI MEC SERVICE: PRECISION MECHANICAL WORKSHOP IN PIEVESESTINA, CESENA

Our distinctive strength lies in technological innovation aimed at maximizing productivity, profitability, and performance.

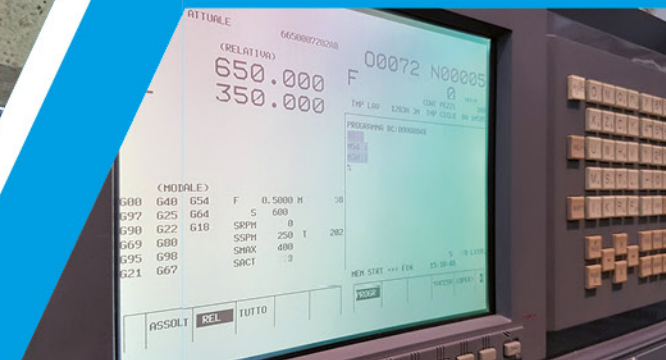
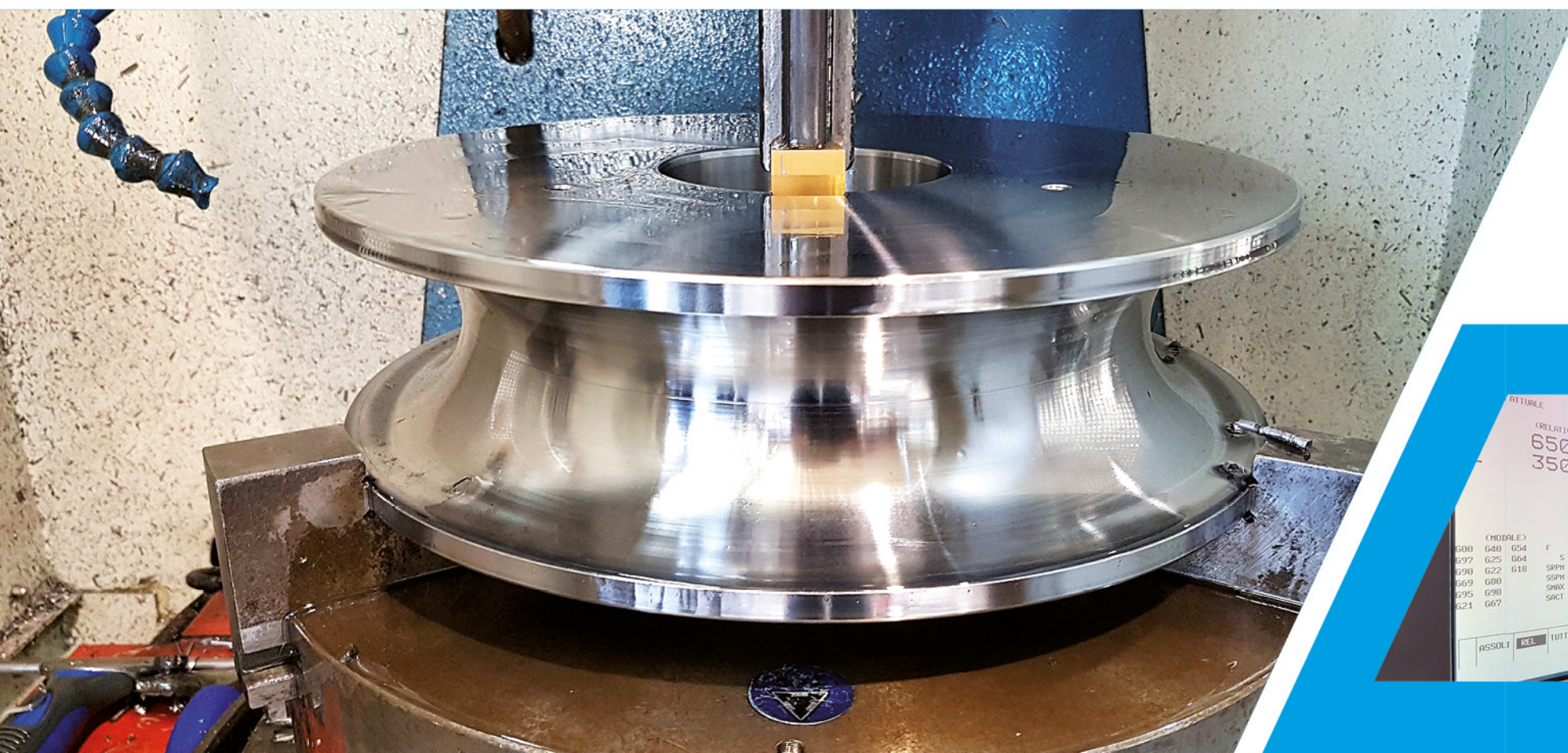
Reliability and efficiency, as well as quality, speed, and precision in processing, are the necessary requirements for all equipment, managed by highly qualified personnel.

The machine park, expanded and updated, is characterized by high performance that allows us to produce with well-defined cycle times.



THE MACHINE PARK AND EQUIPMENT

- Three-dimensional measuring machine "CW mod. CE544A" with a test bed of 500x500x400
- 3D CAD/CAM Top-solid 7
- Horizontal machining center MORI SEIKI MOD. SH500/40 A 6 PALLETS 500x500. Stroke dimensions 600x600x600
- Vertical machining center DOOSAN MYNX 9500 (ISO 50) 2500x950x900
- Vertical machining center HAAS VF4 Super Speed (ISO 40) 1300x500x650 with a continuously dividing table
- N°2 Vertical machining centers QUASER Roto-pallet MK603 (ISO 40) 1000x600x650 on each pallet
- Machining center DOOSAN DNM 750L ISO 50 2000x750x800
- CNC lathe MORI SEIKI MOD. NL 2500 D max turnable \varnothing 450, length 1300 with motorized tools, automatic steady rest, and tailstock in cycle
- CNC lathe MORI SEIKI MOD. NL 2500Y D max turnable \varnothing 450, length 700 with \varnothing 300 chuck, motorized tools, Y-axis, and tailstock in cycle
- N 2 CNC lathes DOOSAN PUMA 400 MB with motorized tools D max turnable \varnothing 650x1000
- CNC lathe DOOSAN VT 900 VERTICAL with motorized tools D max turnable \varnothing 900x700 with a swing of 1100 mm
- N°5 CNC lathes DOOSAN V8300M vertical with motorized tools D max turnable \varnothing 830
- N 2 CNC lathes DOOSAN PUMA V550M vertical with motorized tools D max turnable \varnothing 800





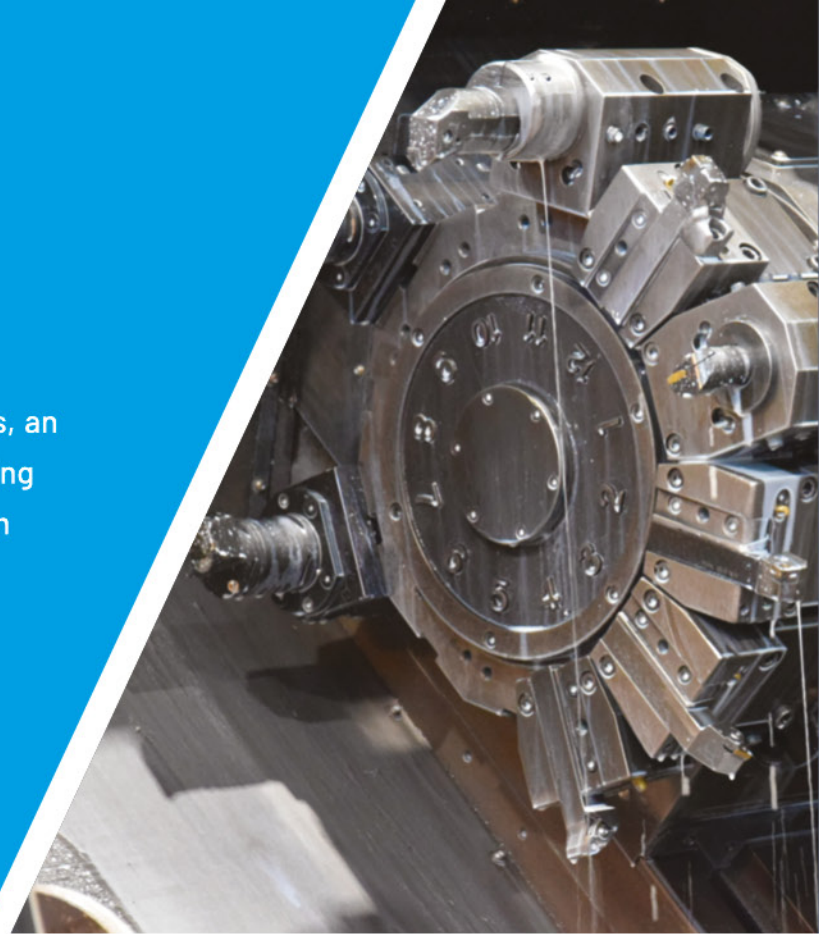
- CNC vertical lathe DOOSAN PUMA V550 with a maximum turning diameter of \varnothing 800mm
- Parallel lathe BULLcompres 300x1000 with visualized \varnothing 250 chuck
- Parallel lathe POTIJE 600x3000 with visualized \varnothing 350 chuck
- Parallel lathe MCM mod Handy with visualized \varnothing 300 chuck and \varnothing 700 swing
- ELI 250b milling machine with rapid head (ISO 40), visualized
- Automatic band saw \varnothing 320 KASTO
- Automatic band saw \varnothing 280 MEP
- Automatic vertical broaching machine CAMS 250 with \varnothing 400 chuck
- 40-ton overhead crane and 15 wall-mounted cranes 200 kg each
- MITUTOYO testing bench 1600x1000 with LINEAR-HIGHT 2D height 600 mm.
- Hundredth of a millimeter control from 0 to 1000, executable on board the machine with a wide range of constantly updated tools
- MONTINI 25-ton forklift
- STILL 20-ton forklift
- CESAB 350 A welder with stud positioner
- FRONIUS 500 A welder with positioner
- DAILY 35-ton truck with loading dimensions of 2000X4500
- Pneumatic microdot marker
- MODULA One Ton automatic vertical warehouse
- N°3 YASKAWA robots with a load capacity of 180Kg operating on three automated islands
- N°2 Renishaw Equator 500 piece inspection systems
- Electronic cabinets



New Machinery

DOOSAN MYNX 9500

Vertical machining center on prismatic guides with 40 ISO 50 tools, an extremely rigid and robust machine for milling, drilling, and boring operations with significant performance, combined with a 3D cam process, it has very reliable and precise repeatability.



YASKAWA 180KG ROBOT

The Yaskawa robot provides a payload capacity of 180 kg and a maximum reach of 2,702 mm, combined with excellent repeatability precision of 0.05 mm.

This six-axis robot delivers fast and precise performance, enabling increased productivity even in applications with heavy load handling.

Equipped with a large working area, it uses an aerodynamic upper arm for easy access to tight spaces.

The robotic mechanical arm efficiently handles significant production batches with an organized workflow.



PUMA V8300 M

With a very generous turning diameter combined with one of the highest power ratings in its class, this vertical lathe enables high-performance machining while maintaining the highest level of precision and reliability during extended operation periods.

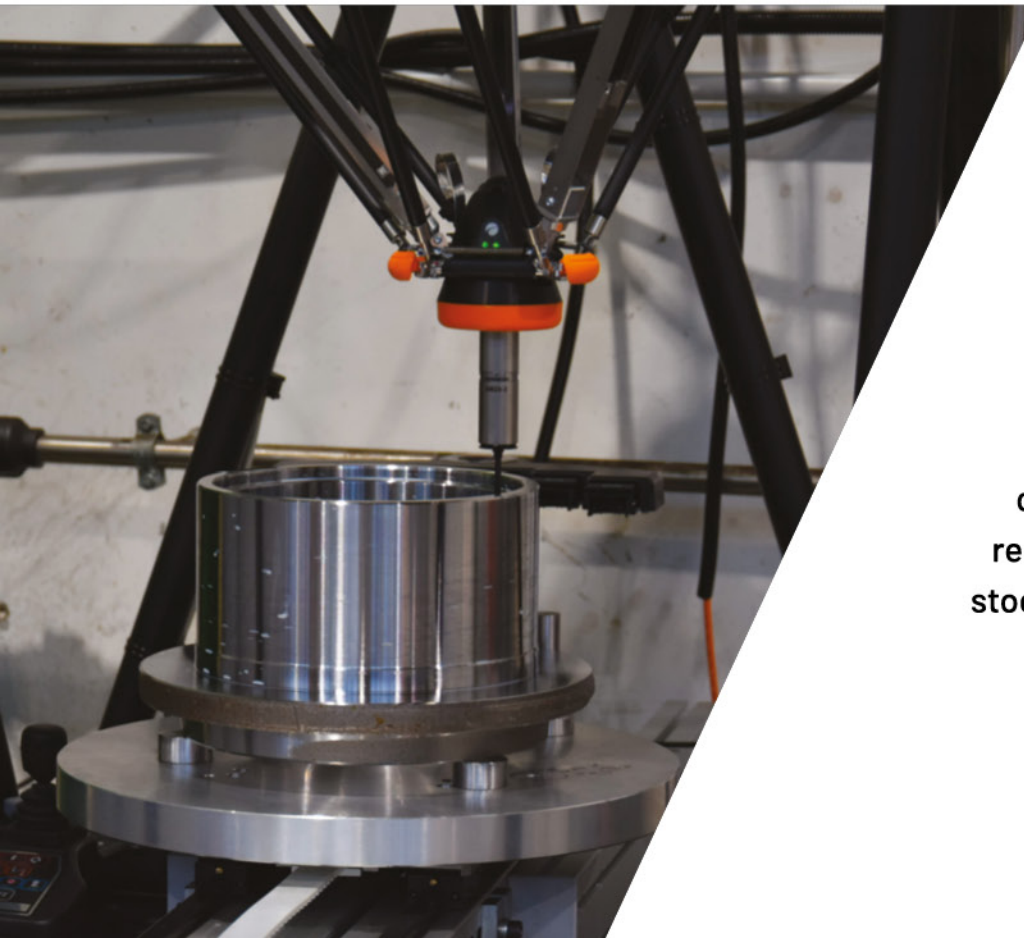
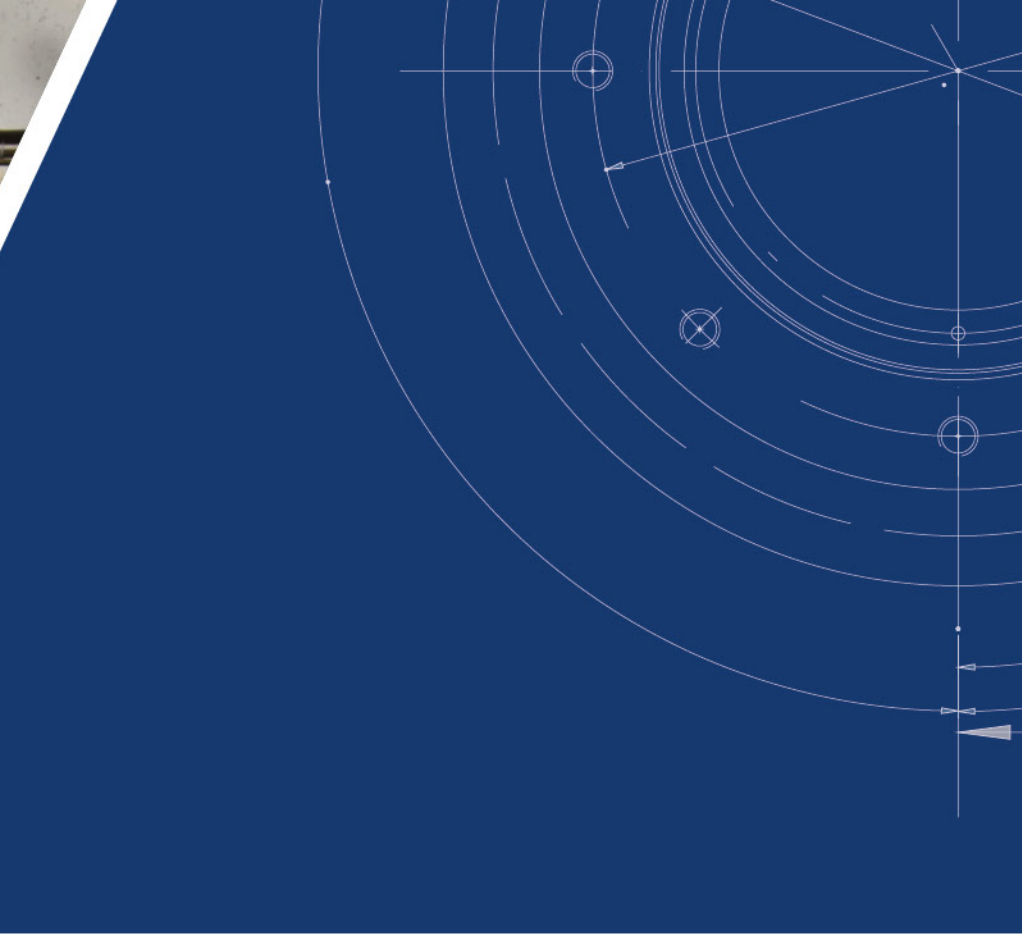


RENISHAW EQUATOR 500

The **Equator 500** system allows inspection of parts within an operational volume of 500 mm in diameter and 400 mm in height. The Equator 500 base can accommodate parts and fixtures weighing up to a maximum of 100 kg. It ensures high accuracy within temperatures ranging from 5° C to 50° C and can achieve scanning speeds of over 200 mm/s.

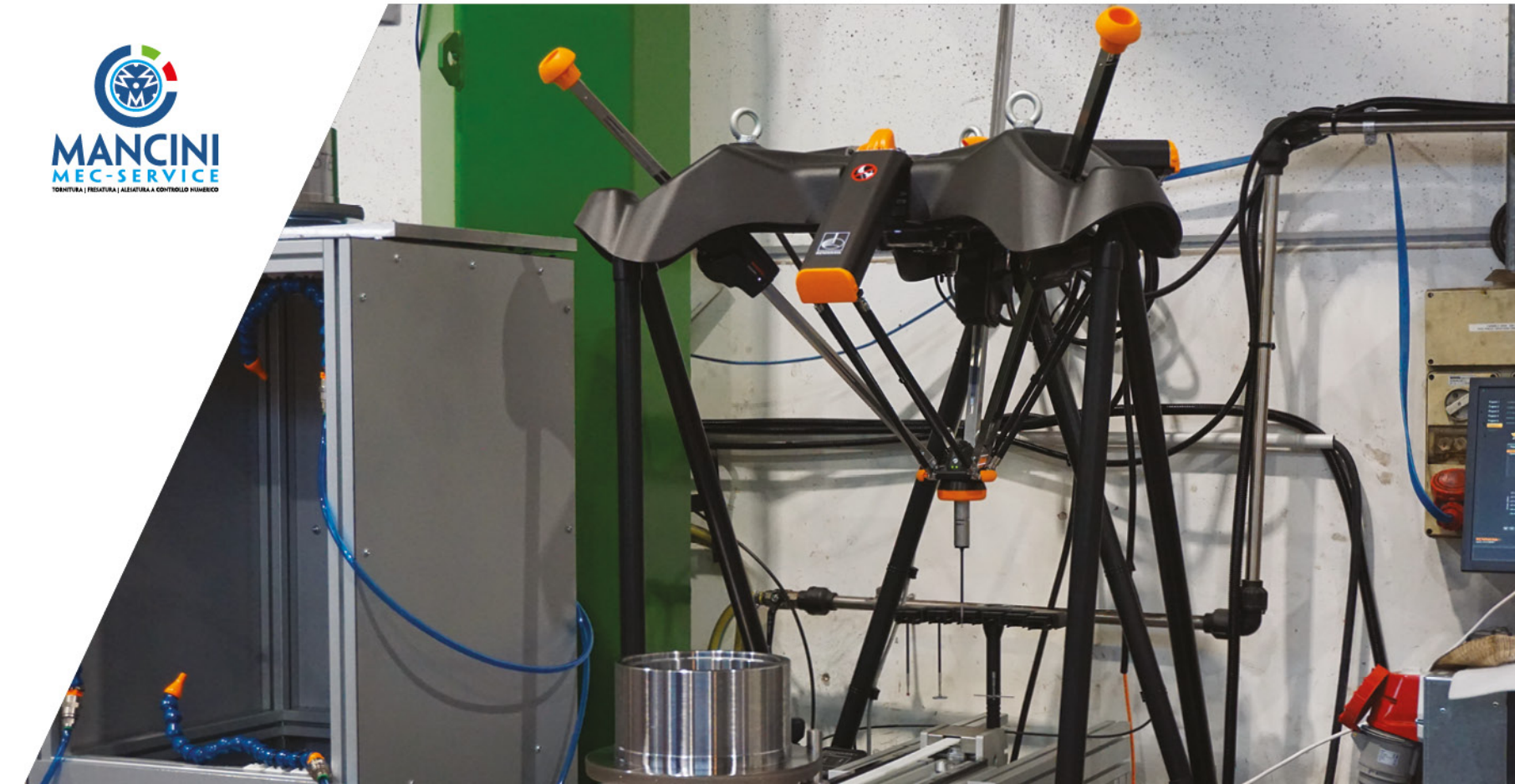
Process drift correction, in addition to reducing the number of rejects, enhances part quality and production capacity.

The proximity of the Equator gauge to the CNC allows for adjustments to be made directly during production, eliminating delays in inspections of finished parts.



ELECTRONIC CABINETS

An innovative system with electronic locking equipped with a special centralized locking mechanism that not only allows for the quick selection of stored materials in the warehouse but also ensures order and appropriate stock levels.



www.mancinimecservice.com



MANCINI
MEC-SERVICE

TORNITURA | FRESATURA | ALESATURA A CONTROLLO NUMERICO

**Our strength lies in the strong collaboration
between design and skilled labor.**

**This enables us to guarantee our customers
professionalism, punctuality, and product quality.**

**We are at your disposal to provide you
with any type of clarification**



MANCINI
MEC-SERVICE

TORNITURA | FRESATURA | ALESATURA A CONTROLLO NUMERICO

**THE EXPERIENCE
THAT SHAPES STEEL**

Via Fossalta, 2785 - 47522 Pievesestina di Cesena (FC)
Tel: 0547 318957 - info@mancinimecservice.it

www.mancinimecservice.com